

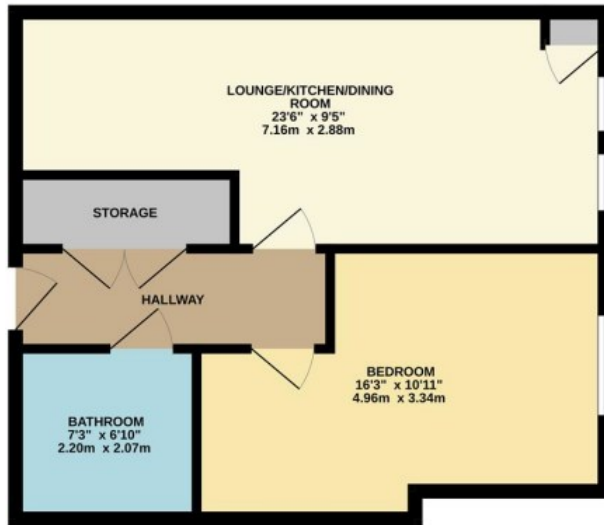


Flat 4, 17 Jefferson Avenue, Hamworthy, Poole, BH15 4FN

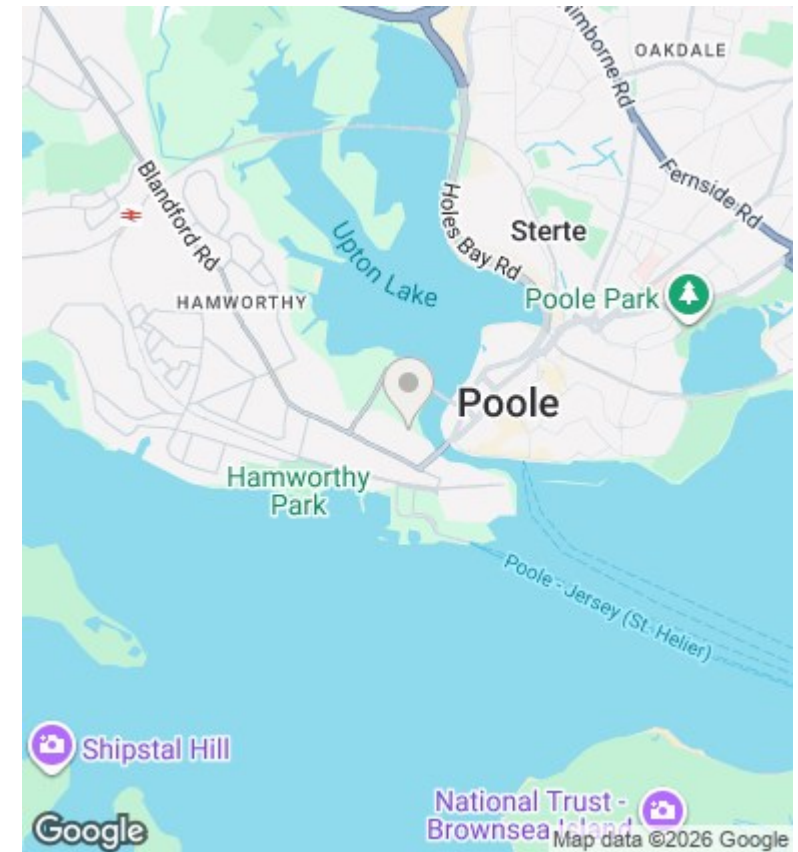
£995 Per Calendar Month

- First Floor Apartment
- Allocated Parking Space
- Sought After Development
- AVAILABLE FROM APRIL!
- One Double Bedroom
- Modern Finish
- Close to Train Links
- Lift Serviced Block
- Well Appointed Kitchen
- Central Heating

GROUND FLOOR
467 sq.ft. (43.4 sq.m.) approx.



TOTAL FLOOR AREA: 467 sq.ft. (43.4 sq.m.) approx.
While every effort has been made to ensure the accuracy of the figures contained herein, measurements of items, windows, doors and any other items are approximate and no responsibility is taken for any error, omission or mis-statement. This plan is for guidance purposes only and should be used in conjunction with any prospective purchase. The services, systems and appliances shown have not been tested and no guarantee as to their operation or efficiency can be given. Plans and drawings ©2023



Directions

Will be meeting her partner Darryl Morrell (his late mothers property) - 07736 845959

Viewings

Viewings by arrangement only. Call 01202 622101 to make an appointment.

Council Tax Band

B

EPC Rating:

B

Energy Efficiency Rating		
	Current	Potential
Very energy efficient - lower running costs		
(92 plus) A		
(81-91) B	81	81
(69-80) C		
(55-68) D		
(39-54) E		
(21-38) F		
(1-20) G		
Not energy efficient - higher running costs		
England & Wales	EU Directive 2002/91/EC	